

Carrington Group (Developer) + Sea Magic Garden (Complex)

Sea Magic Garden residential complex

Location **Kyrenia, Esetepe**



About the project



Developer	Carrington Group
Start of sale	01.10.2022
Key handover	2026
Houses/blocks	7
Building floor	2 Min 2 Max
Units total	88 - 1+1, 22 - 2+1

Distance to the sea - 250 m

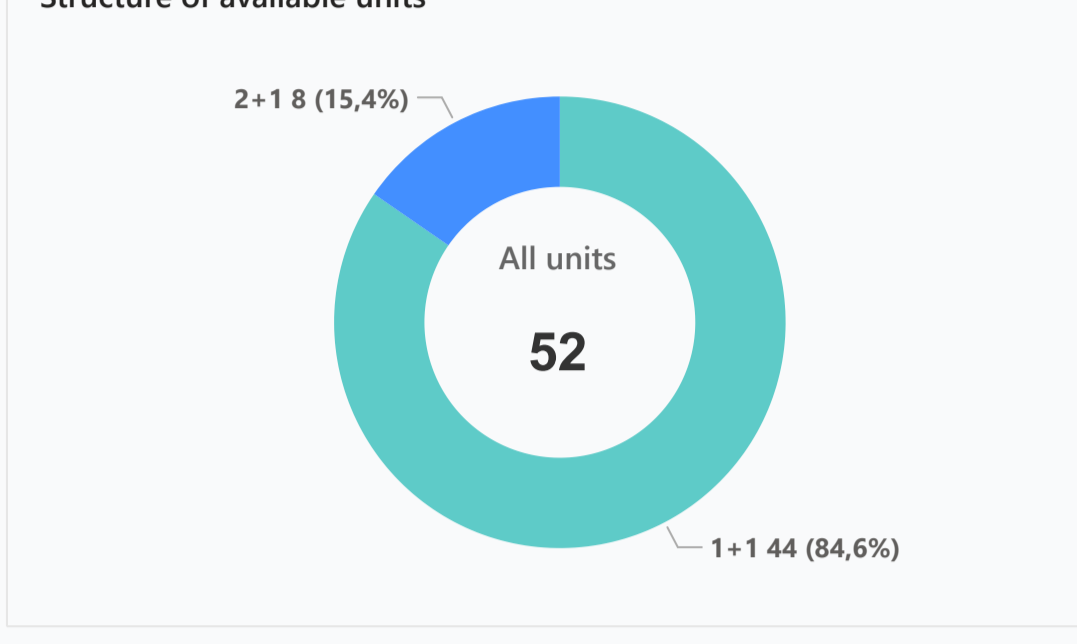
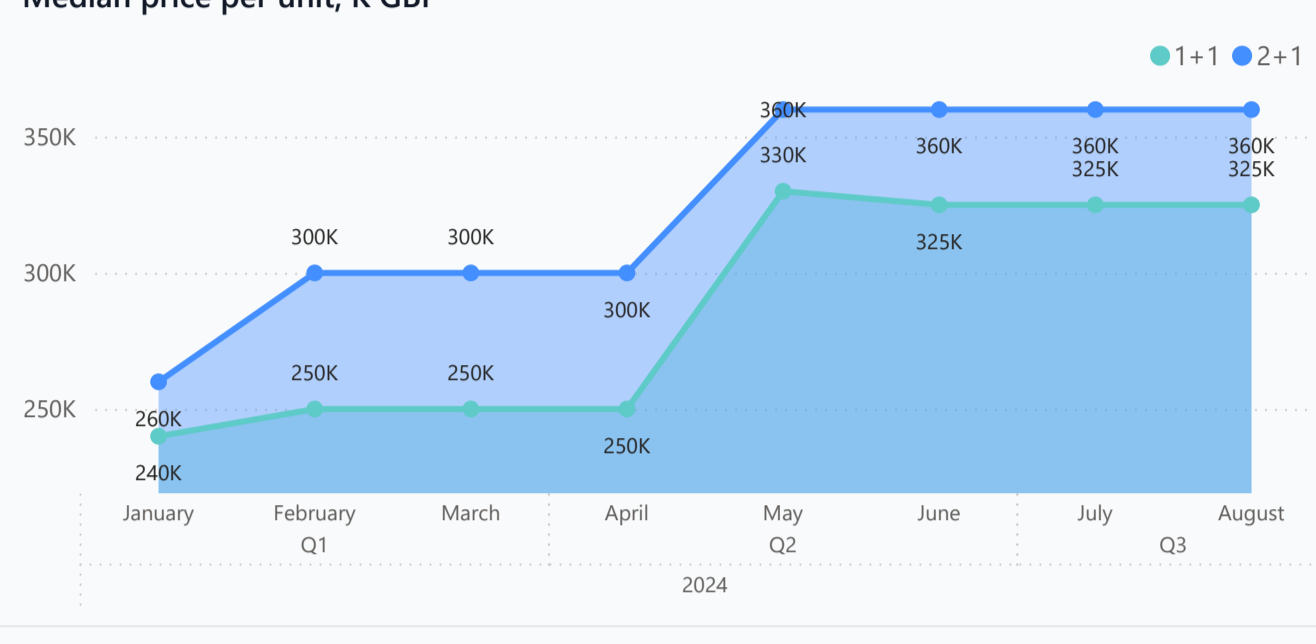
Distance to key locations:
 20 minutes drive to Kyrenia. Airport 60 min. Supermarket 5 min. School 10 min. Kindergarten 15 min. Hospital 8 min. Shopping center 25 min.

The project called "Sea Magic Garden" is located in a picturesque corner of Esetepe, just a quarter of an hour by car from the town of Girne. The mountainous terrain, easy access to the beach on foot, close proximity to supermarkets and an international golf club give this complex a unique character. The complex is built of two-storey blocks, which contain both one- and two-bedroom apartments. The owners of the ground floor apartments can enjoy a private terrace by the house, while the residents of the second floor will have the privilege of using their apartments as penthouses with a private roof terrace.

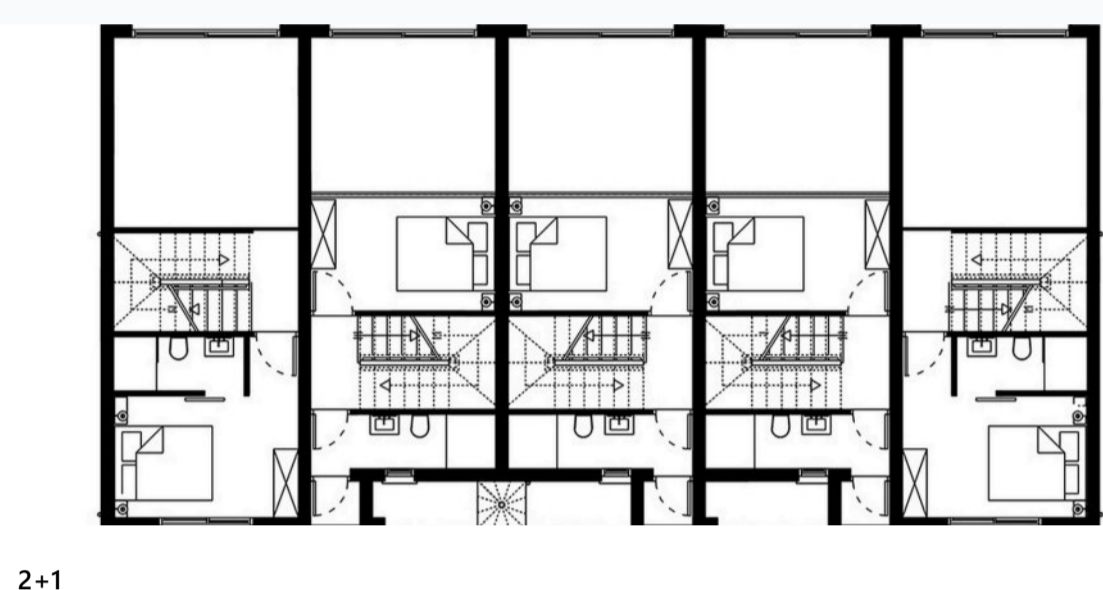
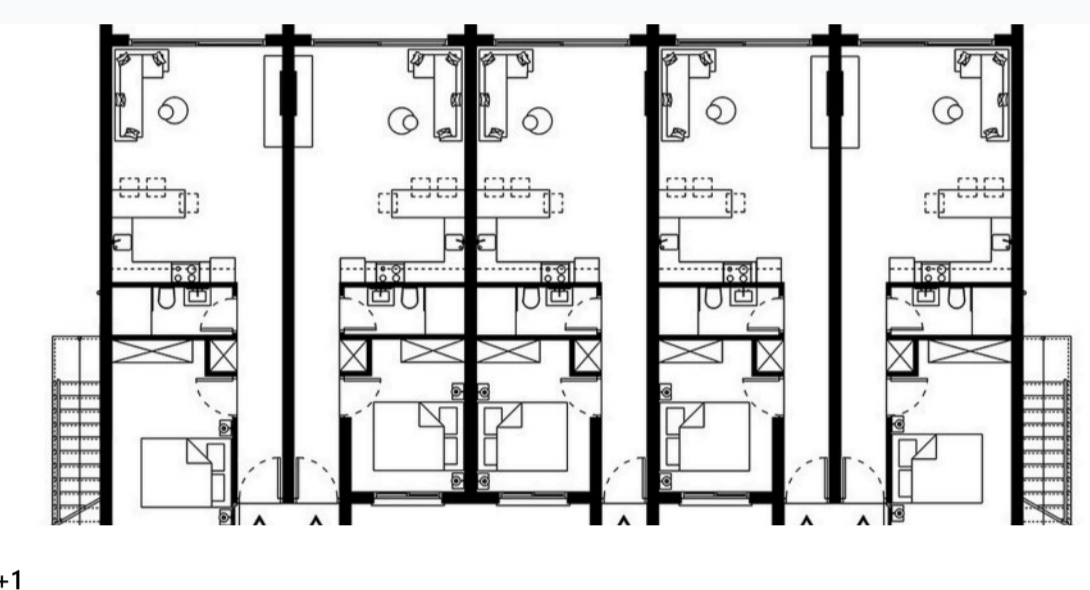
Complex infrastructure

- Bar
- BBQ area
- Cafe
- Fitness centr.
- Kid's playground
- Open pool
- Parking
- Restaurant
- Sauna

Available units 52 / 111 total



Plans



Payment plans

Deposit (non-refundable) 5000 GBP

Option	Down payment	Installments months	Discount	Offer
Option 1	35%	36	-	-
Option 2	-	-	-	-
Option 3	-	-	-	-
Option 4	-	-	-	-

Special offer

Fully furnished design package

Rental guarantee no

Trafo 3490 GBP Resale after 100% Maintenance fee - Rental services 40%

Details

Bedrooms	Subtype	Block	Unit №	Floor	View	Bathroom	Internal area, sq. m	Balcony/Terrace, sq. m	Rooftop terrace, sq. m	Garden, sq. m	Gross covered area, sq. m	Current price, GBP	Price per sqm, GBP
1+1	Loft	B2	B2-17	01			75	10	45		130	329 950	2 538
1+1	Loft	B2	B2-18	01			75	10	45		130	329 950	2 538
1+1	Loft	B2	B2-19	01			75	10	45		130	329 950	2 538
1+1	Flat	B3	B3-7	0			53	10			63	219 950	3 491
1+1	Flat	B3	B3-8	0			53	10			63	219 950	3 491
1+1	Flat	B3	B3-9	0			53	10			63	219 950	3 491
1+1	Loft	B3	B3-12	01			75	10	45		130	329 950	2 538
1+1	Loft	B3	B3-14	01			75	10	45		130	329 950	2 538
1+1	Loft	B3	B3-18	01			75	10	45		130	329 950	2 538
1+1	Loft	B3	B3-19	01			75	10	45		130	329 950	2 538
1+1	Flat	B4	B4-4	0			53	10			63	259 950	4 126
1+1	Flat	B4	B4-7	0			53	10			63	259 950	4 126
1+1	Flat	B4	B4-8	0			53	10			63	259 950	4 126
1+1	Flat	B4	B4-9	0			53	10			63	259 950	4 126
1+1	Flat	B4	B4-6	0			58	10			68	259 950	3 823
1+1	Loft	B4	B4-12	01			75	10	45		130	329 950	2 538
1+1	Loft	B4	B4-13	01			75	10	45		130	329 950	2 538
1+1	Loft	B4	B4-14	01			75	10	45		130	329 950	2 538
1+1	Loft	B4	B4-17	01			75	10	45		130	329 950	2 538
1+1	Loft	B4	B4-18	01			75	10	45		130	329 950	2 538
2+1	Loft	A1	A1-10	01			83	10	45		138	324 950	2 355
2+1	Loft	A1	A1-6	01			83	10	45		138	354 950	2 572
2+1	Loft	A2	A2-6	01			83	10	45		138	349 950	2 536
2+1	Loft	A3	A3-10	01			83	10	45		138	344 950	2 500
2+1	Loft	B1	B1-15	01			83	10	45		138	369 950	2 681
2+1	Loft	B1	B1-16	01			83	10	45		138	369 950	2 681
2+1	Loft	B2	B2-16	01			83	10	45		138	369 950	2 681
2+1	Loft	B3	B3-20	01			83	10	45		138	364 950	2 645

Interior specification



Interior specification

- Ceramic flooring
- Double glazed windows
- Fitted wardrobes in each bedroom
- Granite kitchen worktop
- Toilet integrated in the walls
- Underfloor heating in bathrooms

Exterior specification



Exterior specification

- BBQ place on the roof
- Beach and beach facilities
- Glass fence balcony
- Shower on the roof terrace
- Terracing with inbuilt lighting & power sockets

Location of complex

